

AA: Pig – 2002 I think by Georgia Seitz

BB: 2003 Yellow shuttle by Georgia as well

CC: Hoare type

DD - Debbie A Comfi-Shuttle® Plastic Patented by Deborah Arens of Vancouver, Washington on July 1, 1997 this shuttle claims to have an "improved grip" provided by the flanges along the outer edges of the leaves.

Obviously patterned after the Clover® and Susan Bates® shuttles. 2.240" + .340" point L x .670" W x .422 H

EE – Clover shuttles (green, faux turtle)

FF – Germany – nice feel, but they chip easy

GG – Germany needle holder w/thimble for a cover, Sold to Emma M. 7/2014 for \$12 ☺

HH – Thread winder – Hector goodie bag giveaway

II – Boyes shuttles – from “Patent pending” to “Patent Apr 17, 1923”, to no printing on back side, 2 larger size ones, then 2 generic – no printing at all –how lazy our society has gotten

JJ - Kitty – not sure, bought at Hector?

KK – Susan Bates made in USA (on both sides)

LL – Aerlite – too flimsy to use

MM – Water buffalo horn with mother of pearl/pua checkboard – very sharp point, nice slick feel NN – GR8

Purple resin shuttle

OO – Carved horn shuttle, by Peter Cua, \$40

PP – tiny hook w/wood carved cover/handle (ebay item)

QQ-Not sure if a Hector shuttle 2008

RR- Filigree w/green plastic rhinestone

SS – Pin/gage holder Purple passion wood, As the Wood Turns, by Tony Boucino, Torrington CT 860-482-5190

TT-Bone awl, antique store purchase, Oklahoma

UU - Handy Hands Starlite shuttles – Hector project purchase

VV – Grizzly Mountain Arts, GMA, \$59, http://www.etsy.com/shop/GrizzlyMountainArts?ref=shop_sugg shuttle is

Basswood and the handle is dyed box elder burl

WW – Black hand made huttlles (root of madrona wood and ash wood) covered with protection lacquer & long basis lets to reel longer thread. Large eyelets in the center of the shuttles for easy threading. Length: 7.5 cm (2.95 inches) Height: 1.7 cm (0.67 inches) Width: 2 cm (0.78 inches) from Russia (ebay item, \$24 for 2; 4elnokfryvolite)

XX – Paduk with hook Sidewinder shuttle from Nancy on etsy: Needle Art Goddess Studio:

<https://www.etsy.com/shop/NAGStudio?ref=l2-shopheader-name>

YY-GR-8 Double bobbin, resin, \$38, 2014, Randy Houtz, <http://www.gr-8shuttles.com/garyrandy.shtml>

ZZ - Handy Hands, Moonlite shuttles & bookmark pattern by Sandy, <http://www.hhtatting.com/> \$3.25

AA



BB

DD

CC



FF

GG

HH

EE



II

JJ

WW

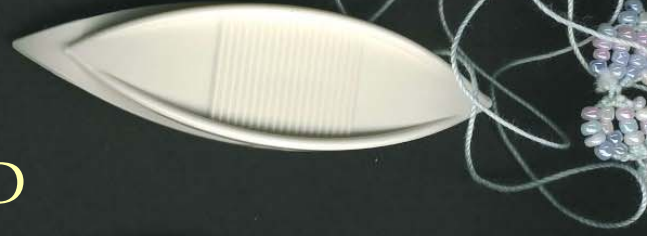




AA



BB



CC



DD



GG



6th
International
Taffety Seminars
April 17 & 18, 2004
Hartford, CT

HH

EE



FF



VV



II



JJ



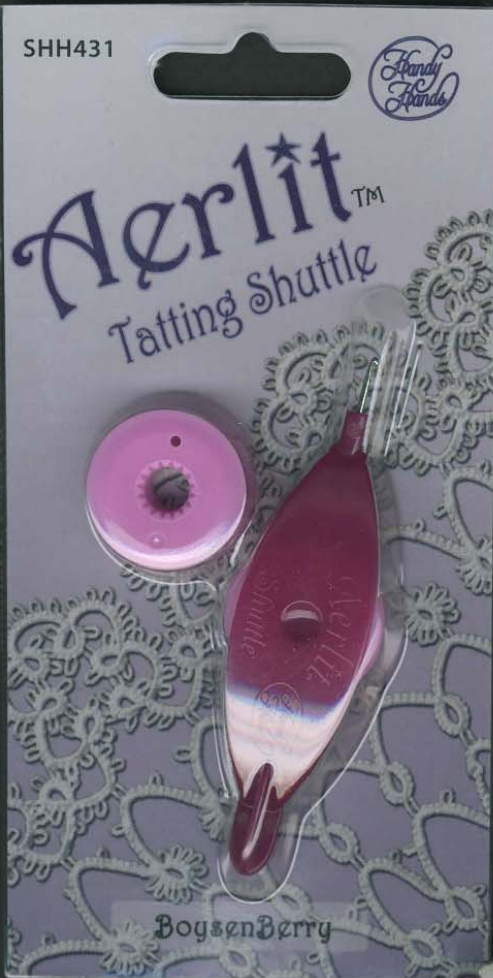
XX



II



KK



LL



II



KK

Aerlit™ Tating Shuttle
 engineered for optimum thread control

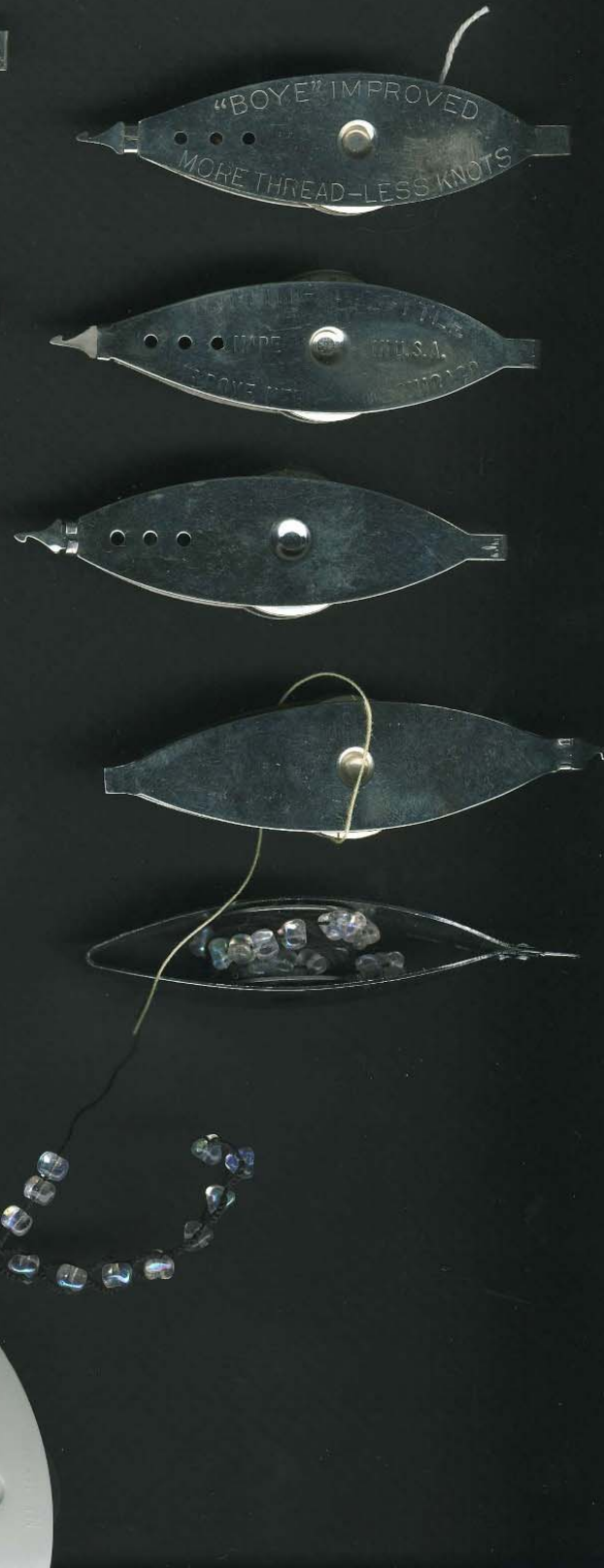
Tatted Jellybean
 ear rings or bookmark
 By Jill Hanna

Also from
 Handy Hands
Lizbeth®
 fine Tating and
 Needlework threads.

Order # - SHH431

BoysenBerry
 www.hhtatting.com

LL



,MM



OO



NN



PP



SS



TT



QQ

RR



AS THE WOOD TURNS

Hand Turned and Fine Crafted Pens of All Styles

DESIGNER PENS
CROSS STYLE
PARKER STYLE
MONT BLANC STYLE
PERFUME APPLICATORS

NATURAL, EXOTIC
and COLORED WOODS

TONY BOUCINO
38 COUNTRY CLUB ROAD
TORRINGTON, CT 06790
Phone 860-482-5190

UU

MM



NN



OO

PP



SS



RR



TT



QQ

AS THE WOOD TURNS

Hand Turned and Fine Crafted Pens of All Styles

DESIGNER PENS
CROSS STYLE
PARKER STYLE
MONT BLANC STYLE
PERFUME APPLICATORS

NATURAL, EXOTIC
and COLORED WOODS

TONY BOUCINO
38 COUNTRY CLUB ROAD
TORRINGTON, CT 06790
Phone 860-482-5190

UU



Waterbuffed Horn Checkered Board
Inlaid w/White Mother of Pearl & Paua
Handmade in the Philippines.
890B

ZZ



From Handy Hands, 2014

Moonlit™
Tattling Shuttle

Tatted Bookmark
by Sandy

Lizbeth®
thread color 184

Enjoy the
premium *Lizbeth®*
tattling and needlework threads
from Handy Hands.

Order # - SHH4206

7 69826 04206 8
Ruby Gem

www.hhtatting.com
Made in China - Packaged in USA

YY



AAA – 4x1 ¾ inches long shuttles: LACE WOOD, COCOBOLO, PADAUK, YELLOW HEART, Ebay 7/2014 \$23 all; Jeff

BBB—Banyek in Budapest hungry, rosewood inlay, custom order w/hook & JMT initials on bottom \$28 etsy, <https://www.etsy.com/shop/Banyek?ref=l2-shopheader-name>

CCC—Cow Bone-ebay purchase, \$20, 3 3/8" eileencaulton@yahoo.co.uk, UK

DDD—Leach & Miller gold engraved (BJ initials originally – will change over to JT for me!) shuttle, ebay item \$42, 2014, 2-7/8" long

EEE--- Antique Celluloid Tattling Shuttle Advertising "Lydia E. Pinkham's Vegetable", ebay item \$65

FFF---Sterling silver, greek key design, \$75 before re-engraving \$40, 2014 WITH WEBSTER HALLMARK. Jerryb6 ebay buyit

GGG---Royal shuttle-rivoted, round post, ebay 2014, \$15; rectangle post – no rivot -older

HHH---Carnation, ebay 2014 \$11, auction_discovery,

III---Steel shuttle, unmarked, ebay purchase 2014, 3" s\$autographs, \$22 buyit

JJJ---Etsy Tattling Shuttle (Rose & Myosotis), <https://www.etsy.com/shop/LaCossette?ref=l2-shopheader-name>, LaCossette – love the 3 pea tatted piece that came with the envelope...\$32 (from Bristol, UK) 2014

KKK—Brass shuttle from Barbados, ebay \$95, from rosita*s, 2014

LLL---Sewing kit, ebay 2014, \$6 Auction_Discovery

MMM—1940's? Cream Bakelite (?) shuttle with bobbin, rivet ends 3.5" X 1", etsy purchase, \$14 Aug 2014

NNN—Tartenware shuttle, antique shop in UK, \$85

OOO—Boye with (rivet broken) with bobbin on a swingout arm, ebay \$11 ebay

PPP--- Antique mother of pearl tattling shuttle with cream and ivory tones to the pearl, \$24 ebay 2014

QQQ---2 1/2" long. Cream and Red Marbleized celluloid(?), \$35 ebay, 2014

RRR--- Albino Horn by Peter Cua- 2.7 inch w/ point - Etched one side with Phoenix, from <http://tattling.co.uk/>

SSS---Presencia shuttle, <http://tattling.co.uk/> \$7

TTT---Large 3" Clovers, <http://tattling.co.uk/>, \$12

UUU---needlecases from <http://www.blackyak.co.uk/products/animal-needle-case/animal-needle-case1.html>, \$25 e



AAA – 4x1 ¾ inches long shuttles: LACE WOOD, COCOBOLO, PADAUK, YELLOW HEART, Ebay 7/2014 \$23 all; Jeff

BBB—Banyek in Budapest hungry, rosewood inlay, custom order w/hook \$28 etsy,
<https://www.etsy.com/shop/Banyek?ref=l2-shopheader-name>

CCC—Cow Bone-ebay purchase, \$20, 3 3/8" eileencaulton@yahoo.co.uk, UK

DDD—Leach & Miller gold engraved (BJ initials originally – will change over to JT for me!) shuttle, ebay item \$42, 2014,
2-7/8" long

EEE--- Antique Celluloid Tattling Shuttle Advertising "Lydia E. Pinkham's Vegetable", ebay item \$65



AAA



BBB



CCC



DDD, my initials below:



EEE





AAA
BBB
CCC



My

initials:



HHH

DDD

EEE GGG



III



KKK



LLL



Brass shuttle has Joan engraved

6 pack 2 horn; 2 bone, 2 MOP,
ebay \$42

Buy UK \$40 Chinese or English
(1850s) carved bone

Tortoise (faux) old \$20

Philippines Black cheaply made
(\$11 ebay)

Pop-a-bobbin zebrano wood; \$20
Euro, janeeborall@btinternet.com
& flat Purple heart \$7.50 EURO

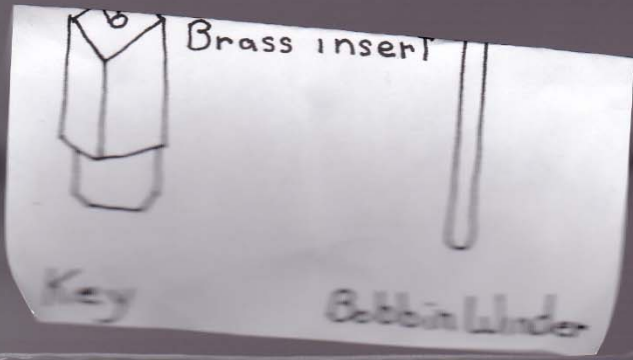
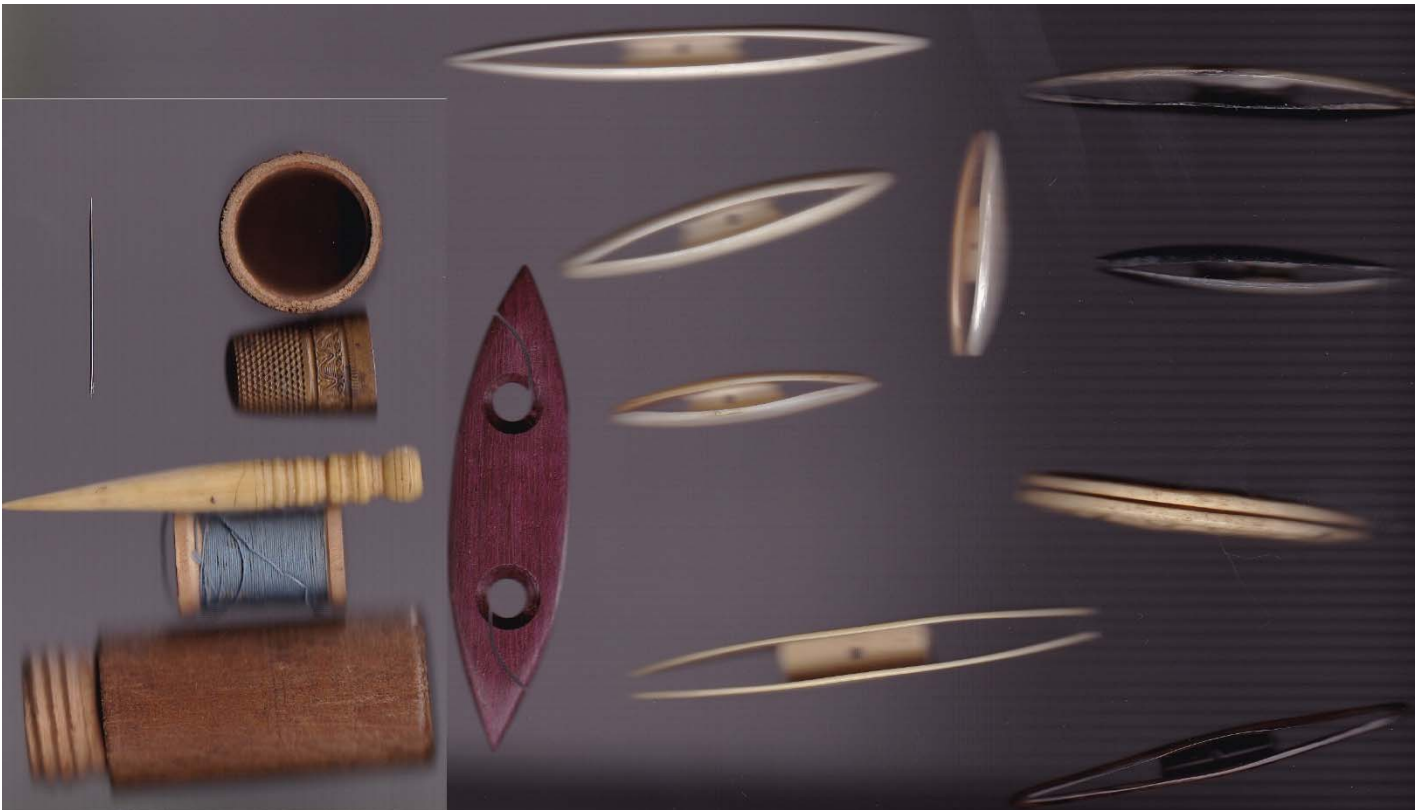
Blue sidewinder shuttle, Etsy
NAGStudio, \$26 rosewood Monica
Braxton

JMT on silver shuttle \$35 to
engrave; \$75 WEBSTER GREEK KEY

Wood/brass thimble sewing kit
w/bone awl, \$9.50 SCHULTZ'S
TREASURES ebay ct

LaCossette etsy acorn (\$20
decorated aero)





INSTRUCTIONS

Return bobbin to the centre of the shuttle and replace plug

Shuttle

Bobbin

Plugs

Popper tool

For more information visit us at popabobbinsshuttle@googlemail.com



<http://www.ebay.com/usr/oldtymeantiques> - =Jeff made double bobbin from Lacewood, \$15 & the Purpleheart single



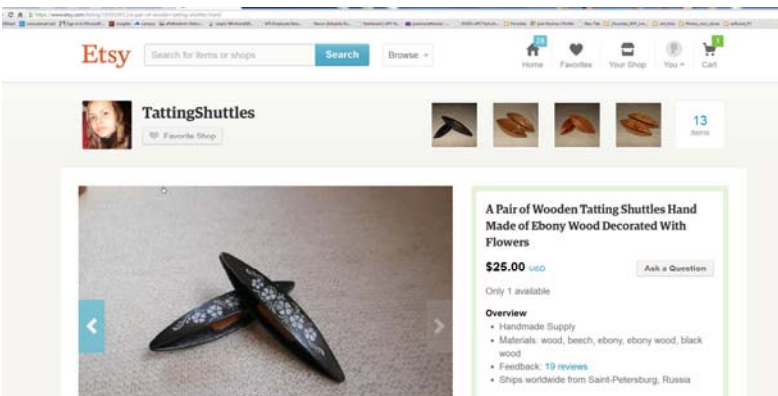
Purchased, Ebay, 2 webster sterling silver shuttles



From Chili (facebook)



[Veronica \(Russia\)](#) – her grandfather made shuttle for Nina Libin, now she makes them, \$25 for 2 – takes a while to get but worth it 😊.



Brass set celtic style, engraved Joan from Rosita (Ebay)



2014 Shuttles by LaCossette (Etsy Shop)
Photo shuttles of Block Island and Hawaii